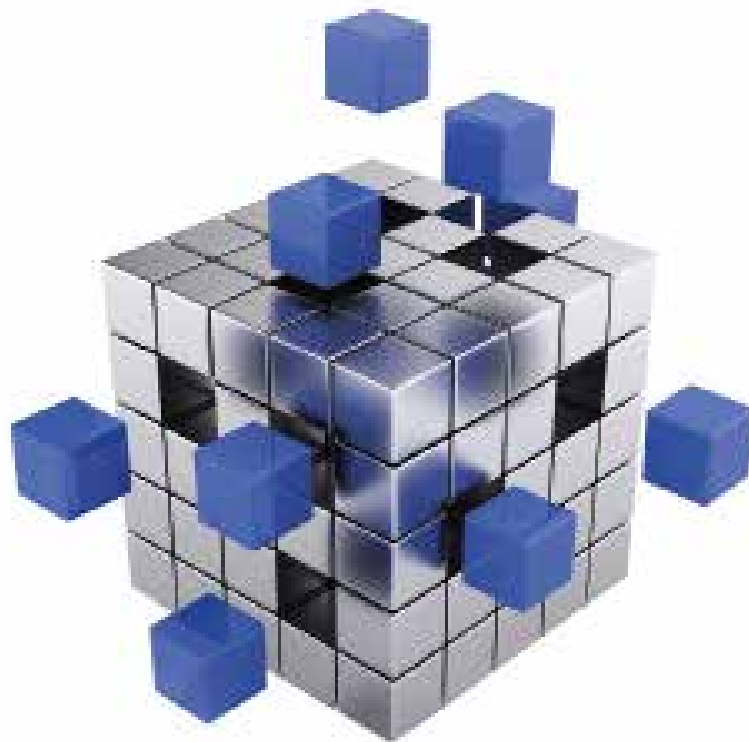


fela



We Go with Transit Logistics.

www.fela.ch

Index

- 2 Our Clients
- 3 Who We Are
- 4 Our Objectives
- 5 Your Benefits
- 6 Our Approach
- 7 Our Product Lines
- 8 EasyDrive Product Line
- 11 CarLoc® Product Line

Our Clients

STADLER

DIE POST

SBB CFF FFS

dr BUS in CHIUR
STATIBUS CHUR

arcobaleno
la scelta giusta

PostAuto

AAGS Auto AG Schwyz

Kantonspolizei
Zürich

ascom

T

Nokia Siemens
Networks

HUPAC
moving together

e-on

vodafone

Who We Are

FELA Management AG in Diessenhofen, Switzerland, is part of the FELA Group, which was founded in 1967. As a producer of electronic components and traffic telematics systems, FELA Management AG offers technologies and services focusing on vehicle tracking, toll systems, and traffic management.

The POIS ITCS Solutions system centrally manages systems and components in real-time, allowing a rapid and transparent dispatch of vehicles, thus enabling an easy central management of timetables and passenger information. The combination of technology with dynamic information systems provide passengers with reliable and up-to-date information on routes and possible changes.

EasyDrive system solutions for rail and public transport: Our product lines consist of (but are not limited to) control systems, ticketing systems, dynamic internal and external passenger information systems, video surveillance and emergency intercoms. In addition, we are the manufacturer of the Swiss HVF toll system.

CarLoc® telematics systems offer integrated high quality solutions for the transport and logistics industry. Sector-specific optimized, intermodal applications for freight forwarding, construction companies and courier services enable cost reduction and productivity improvement.

FELA Management AG is represented in the EU by its 100% subsidiary FELA Deutschland GmbH, which is based in Birkenfeld, Germany.

Our Objectives



- **Recognising Potential**
- **Optimizing Processes**
- **Improving Performance**
- **Being Decisively Ahead of the Competition**

We combine technological expertise, open innovation culture, long-term market experience and a deep understanding for the needs and processes of our customers.

From this vantage point, we develop solutions that provide the economic and technological added value that will make your company stand out from the competition.

Your Benefits



We follow a simple but effective corporate philosophy: Rather than selling mere products to our clients, we want to inspire them through customer-oriented solutions that combine competitive and cost advantages.

- **Fast Amortization**
- **Long-Term Benefits**
- **Superior Competitive Edge**

We have measured ourselves by these factors since 1967 with great success.

Our Approach



As a full-service vendor, we provide a wide spectrum of services:

- **Consulting**
- **Project Planning**
- **Solution Integration**
- **Maintenance**
- **Support**
- **Training**

Using your requirements profile, we analyse the processes of your company, identify the potential for cost optimization and revenue drivers, then implement your processes through a tailor-made solution package.

Our modular and scalable solution packages are individually adapted to your needs and development targets.

Our Product Lines



ITCS - Intermodal Transport Control Systems



- Passenger Information Systems
- Hardware: HMI, TFT-Monitors, Audio-Systems etc.
- Customizable Software Systems, web-based
- Traffic Management
- Platform independent
- Licensing Models
- Customization



Comprehensive Solutions for Public Transport



- Automated Central Control
- Infotainment
- Ticketing
- Traffic Management
- Obsolescence Management
- Customization



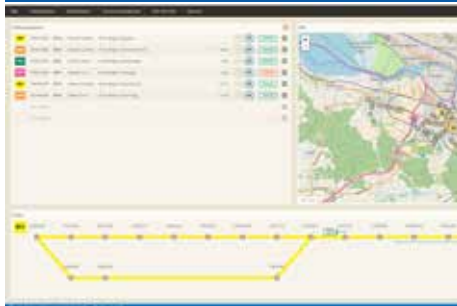
Integrated Solutions for Transport and Logistics



- Operating Data Acquisition
- Fleet Management
- Container Tracking
- Temperature Monitoring
- Eco Drive
- Hazardous Goods Monitoring
- Electronic Logbook and more

POIS Product Line

ITCS - Intermodal Transport Control Systems



ITCS



HMI



Passenger Information

What Does Our POIS Product Line Offer?

The web-based POIS ITCS Product range manages all systems and components (like passenger information system etc.) centrally: real-time information, intuitive operating concept,, modular, scalable and platform-independent, also with a licensing model. It complies with any relevant train regulations like VDV 452, 453/454.

Passenger Information

EasyDrive Informs Passengers Through Various Channels

Passenger information occurs through different components, such as monitors for interior and exterior displays or audio systems, which continually inform the clients. Mobile input devices, operated by the conductor or engine driver, are also a part of the EasyDrive installation.



A good customer information system is characterized by clear visual information and clear loudspeaker announcements. Using EasyDrive these can be generated with little technical effort. This optimized information flow considerably increases customer acceptance and ensures that all relevant information is quickly and safely understood by the passengers.

Safety System

Safety in the Train: Video Surveillance and Emergency Intercom

Video surveillance is a simple and efficient measure to prevent acts of violence in the train. Coupled with the emergency intercom, the recording rate can be modified to save more images in case of an emergency.

POIS Product Line

ITCS - Intermodal Transport Control Systems

ITCS/POIS G3 – The POIS-System

Are you looking for a control system for the public transport that covers all aspects? Aspects such as:

- Generating and managing timetables/wagon routes
- Graphic operation overview in real time
- Giving reports to drivers/vehicles/passengers
- Passenger information (matrix displays and TFT displays)
- Content management (news/advertisement)
- Digital announcement systems
- Stop announcements and line view



Would you like your drivers to input the route number in the on-board computer when they start work and let the system take care of the rest? Do you want to know where your vehicles are at all times and if the timetable is adhered to?

Then, POIS is your system!

Solutions and Services for New Construction and Retrofit, Rail and Bus

Whether retrofit or new construction, rail or bus: FELA has comprehensive international expertise in all of these areas, and we strive to find the optimal solution package for you. Here are some of the impressive EasyDrive projects we have already produced:

- Retrofit S4 – SZU – Sihltal Zürich Uetliberg Bahn (Switzerland)
- Retrofit project in Sweden
- S10 – Sihltal Zürich Uetliberg Bahn (Switzerland)
- NÖVOG – Mariazellerbahn (Mariazell Railway) – Himmelstreppe (Stairs to Heaven) (Austria)
- Turbo AG (Switzerland)
- Stadtbus (city bus) Kreuzlingen
- Stadtbus (city bus) Chur (Switzerland)



EasyDrive Product Line

Comprehensive System Solutions for Public Transport



Rail



Bus



Tram

What Does Our EasyDrive Product Line Offer?

EasyDrive includes all the necessities for modern integrated solutions in rail, bus, stations and stop areas: Comprehensive passenger information solutions, fare management with ticket vending machines according to the S-POS standard, driver and over-the-counter ticket sale according to the S-POS C and CS standards, ITC systems according to VDV norms and dynamic stop indicators.

Safety System

Safety in the Train: Video Surveillance and Emergency Intercom

Video surveillance is a simple and efficient measure to prevent acts of violence in the train. Coupled with the emergency intercom, the recording rate can be modified to save more images in case of an emergency.



Ticketing

Modern ticketing systems from FELA

Printed tickets, electronic RFID tickets or both combined – we have the solution for you. Our system is prepared for fare systems, fare networks or national traffic over various interfaces.



Electronic Ticketing

The EasyDrive electronic ticket system is based on a contactless RFID smart card technology. The passenger selects the desired ticket type on the EasyDrive terminal. The ticket is written on the smart card and can be read with various ticket control equipment.



Conventional Tickets

EasyDrive offers the best solutions for providing tickets from stationary and mobile ticket vending machines, for driver and over-the-counter ticket sales.

EasyDrive Product Line

Comprehensive System Solutions for Public Transport

Ticket Vending Machines

The S-POS M Device Family

The S-POS M device family consists of modern, proven devices, which are characterized by extreme robustness and low maintenance costs. The ticket vending machines can be configured for specific requirements:

- Touchscreen Operation
- Remote Maintenance
- Coin Processing
- Banknote Processing
- Bank Card Authorization
- RFID



All S-POS M ticket vending machines are prepared for electronic ticketing with smart cards and allow an easy migration to RFID technology.

Hardware

Hardware for Rail, Bus and Tram

Our reliable and modern hardware solutions comply with all technical criteria required in the rail, bus and tram fields. The in-house products from FELA such as stationary ticket vending machines and on-board computers, guarantee high investment security thanks to their longevity. The robust and versatile TFT monitors are available in different sizes, so they can be used for both vehicle and stop-area displays. Our hardware solutions can be easily and seamlessly integrated into the complex world of traffic telematics.



CarLoc® Product Line

Integrated Solutions for Transport and Logistics

What Can You Expect from our CarLoc® Product Line?

With our CarLoc® products, we demonstrably reduce maintenance costs by up to 20% per year and increase the productivity of construction sites. Moreover, we improve long-term transport quality on the road and rail, and increase security across all traffic carriers.

Temperature Monitoring

Exact temperature settings for our end customers: Continuous verification for up to three cooling zones!

Continuous temperature monitoring with CarLoc®: When quality is a question of the right temperature, we are the right contact with our CarLoc® product. With this solution we can permanently monitor the maintenance of the cooling chain. We can register, report and evaluate every deviation in a timely manner and deliver a continuous verification to you.



Container Tracking

Complete transparency and cycle time optimization – with CarLoc® we improve the productivity of your containers

Are your containers not reaching their destinations on time? Are they waiting for days to be processed? Are they being used by others in the meantime or do they even disappear in mysterious ways? With CarLoc® we offer you reliable container tracking, which enables you to locate your containers at any time and to considerably improve your productivity.



Mileage Recording

**Ready at any time – goods transport on rail
CarLoc® reduces maintenance costs and increases the availability of your wagons**

Availability plays an important role in goods transport on rail. The optimum utilisation of your wagons guarantees a good cost-benefit ratio, maximum revenue and high returns. Consequently, our aim is to keep your wagons on the tracks as long as possible and to exclude all possible security risks.



CarLoc® Product Line

Integrated Solutions for Transport and Logistics

Eco Drive

Increase mobility – conserve resources:

CarLoc® Eco Drive supports the attainment of your objectives

In addition to personnel expenses, fuel is a major cost factor in logistics. The intelligent handling of fuel opens up the potential for great savings.



With the CarLoc® Eco Drive package, we register all consumption-related driving data, with up to 100 different variables. Consequently, we are able to make precise statements about your optimization potential. With CarLoc® you can reduce the fuel consumption of your fleets by up to 15%. Moreover, the CO₂ emissions as well as the noise pollution decrease. Thus, climate protection becomes a wise investment with a fast return.

Operating Data Acquisition

Always in view and more time for the essentials: mobile recording of working and operating times with CarLoc®

Optimal staff employment can be crucial for your success – particularly if it concerns field service. Our CarLoc® system automatically records all relevant mobile data concerning working and operating times. CarLoc® ensures more transparency in employee allocation and an agile administration, so you can focus on your core business.



Hazardous Goods Monitoring

Partner in dangerous situations

CarLoc® improves the security and productivity of hazardous goods transport

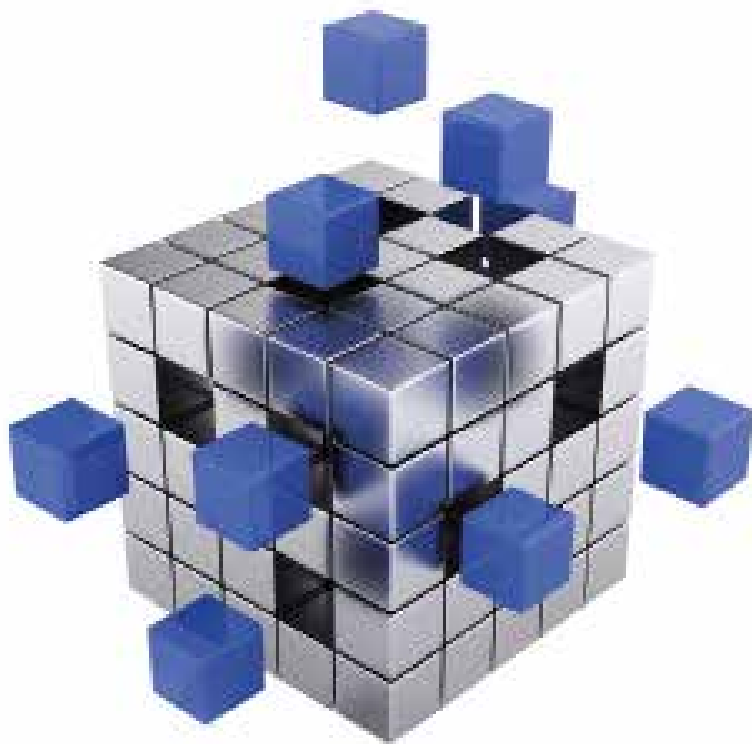
Safety is top priority when it comes to the transportation of hazardous material. The right safety concept can be the decisive criterion when selecting a logistics partner. With CarLoc® AT-ATEX-II, we offer you an easy way to continuously monitor the travel progress of your hazardous materials. When entering or leaving predefined areas such as terminals or ports of transshipment, the action will be documented. If the consignment deviates from its planned route, CarLoc® immediately triggers an alarm.



5 Good Reasons for Choosing Us:



1. We sell knowledge and solutions.
2. Giving your company a competitive advantage is our goal.
3. We guarantee high quality solutions.
4. We possess considerable engineering know-how from our 50+ years of experience.
5. We strive for long-term customer relationships.



CB2018_en_FIS_30102018