



FELA company presentation

About us

More than 50 years of Swiss Engineering

The FELA Group is a healthy and solid Swiss SME that is independent, sustainable and long-term oriented. We develop and manufacture individual System solutions for public transport.

Our organization

- Founded in 1967 by Ernst Uhlmann, family-owned to this day
- Management by the President of the Board of Directors, Dr. Jürg Uhlmann and Managing Director Jannik Uhlmann
- Development and production at the headquarters in Diessenhofen CH and the branch in Birkenfeld DE
- Approx. 65 employees, 60% of them in development and technology



FELA Management Ltd

Diessenhofen TG / CH

**Individual system
solutions in public
transport**

FELA Germany GmbH

Birkenfeld / D

**Competence center
for IoT tracking**

FELA Planning Ltd

Neuhof AG / CH

**Infrastructure projects
and turnkey
construction**

Pioneer spirit

Innovative on new paths



1998

Telematics
system CarLoc

2001

Toll system
Switzerland
HVF

2003

Passenger
information
ITCS POIS

2010

Ticketing
System
EasyDrive

2016

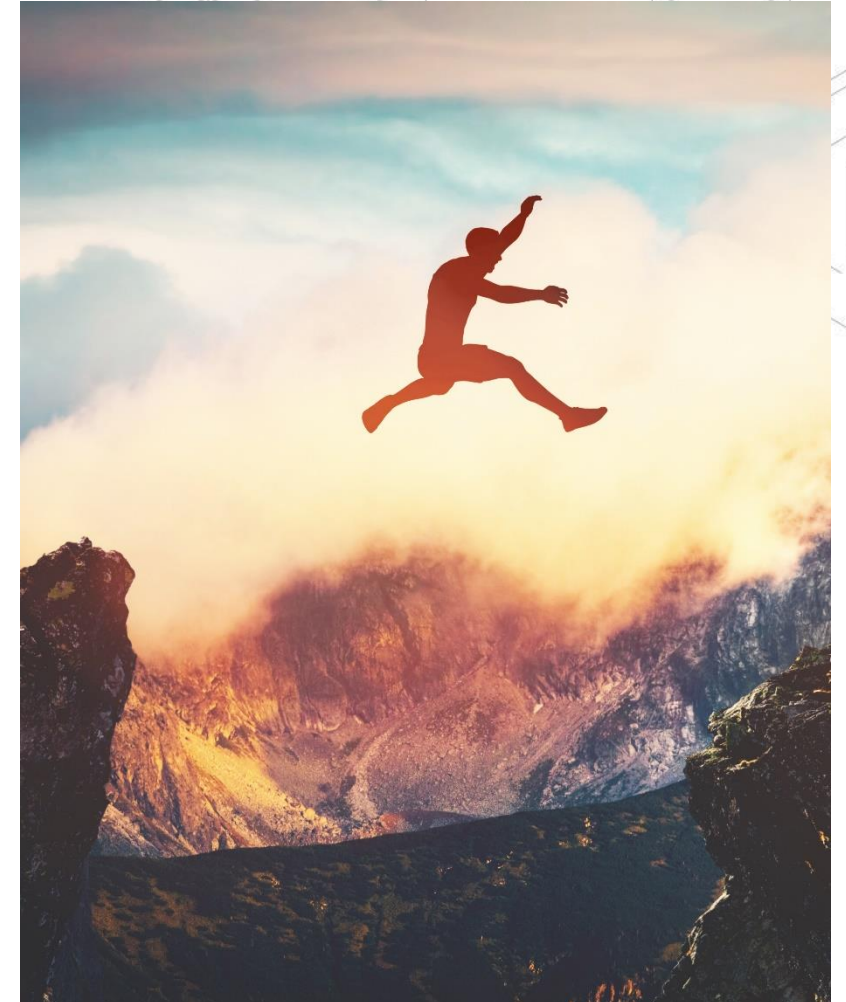
Combination of
POIS and FIS

2021

FELA
data hub

Driving force: Courageous pioneering spirit

- FELA is characterized by innovative strength and courageous decisions when new paths have to be taken.
- New development toll system
Development of the LSVA toll system for Switzerland. Participation in an ideas competition (with a total of 350 participants) to determine the requirements, development of the functional prototype and winner of the tender as a previously unknown player.
- First battery powered GPS tracker
Development of one of the first battery-operated GPS trackers suitable for railroad use as part of a new development of GPS trackers for commercial vehicles. Expansion to become FELA's largest mainstay for many years.
- New pillar passenger information and ticketing
New development of a passenger information system. Expansion through ticketing solutions and its own software offer to the meanwhile most important business segment
- Own FELA data hub
First independent supplier with its own data hub and direct connection to SBB's central data hub CUS.



Our values

FELA - a family since 1967

- Reliability, commitment, a sense of community, appreciation and taking responsibility are the pillars of our company.
- This is how we lay the foundation for motivation and innovation to ensure the highest quality for our products and customers.
- We want to continue to be a strong family in the future, which acts carefully and with foresight and fully accepts its responsibility.

We at FELA are
down-to-earth,
reliable and
solution-oriented
for our customers.



02 Competencies

Project partner with handshake quality

Our aim is to offer you exactly the combination of components and system architecture that meets your requirements. We are at your service with our expert knowledge in passenger information, ticketing, IoT tracking and refit .

Competency overview

Expert knowledge for tailor-made services

Development and construction

- Customized solutions for individual requirements
- Expert knowledge in mechanical engineering, electrical engineering and IT
- Many years of experience with common approvals, standards and customization options
- Obsolescence management with a guaranteed lifetime

Software solutions

- Server applications, control software and firmware for holistic networking of all components
- User-friendly frontend interface
- Flexible combination of functions using software modules
- Data preparation, data analysis and reporting as a service



Competency overview

Expert knowledge for tailor-made services

Components

- Own hardware and firmware development at the FELA locations
- Production according to ISO 9001
- Own repair service for all components
- Turnkey configuration before delivery

Services & Support

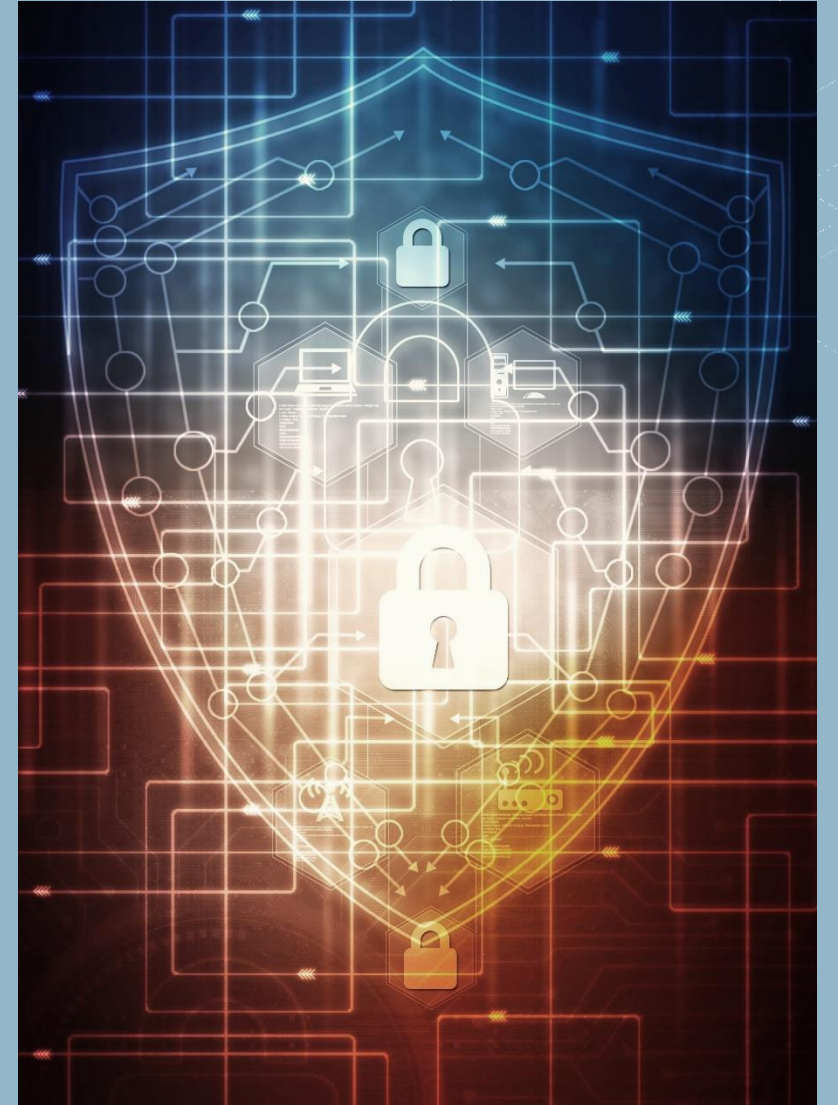
- Commissioning and troubleshooting by our own employees
- Detailed product and system training on the customer side
- Own test systems for quality assurance and for individual system adjustments
- Personal service technicians for all questions after commissioning, by phone or on site



IT security management

ISO 27001 certification for safe mobility

- Digitization and networking enable new flexible offers in public transport, better and faster information for passengers and easier ticket purchasing.
- But the number of cyber attacks is also growing. They use networked devices and endpoints as gateways.
- The confidentiality, availability and integrity of customer data is the top priority for FELA.
- With IT security management in accordance with ISO 27001, we help minimize the risk of security gaps and protect your data against unauthorized access in the best possible way.



03 Our portfolio

Individual system solutions

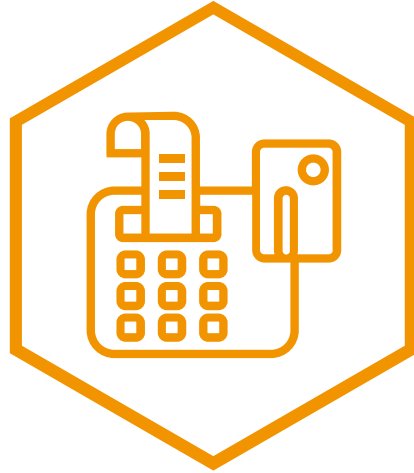
We plan, develop and manufacture electronic components and complex traffic telematics systems for public transport by train, bus and shipping as well as innovative information and tracking solutions.

Solutions for traffic and transport



You are a train operator and need a passenger information system?

We develop a system solution for you that precisely takes the special features of your fleet into account.



You are a bus operator and are looking for a ticketing system?

We network our client-capable backend with tills and ticket vending machines from our portfolio.



Do you want to bring your vehicle fleet up to the latest technical standard?

We design clever refit concepts for you, precisely tailored to each of your vehicle models and the entire fleet.



Do you want to increase your efficiency through IoT tracking?

We develop individual solution packages, including data analysis and reporting with clear recommendations for action for your application.



Passenger information

Reliably informed on bus and train

- Everything from a single source: screens and displays, audio systems, video systems, on-board computers, network components, passenger counting, etc.
- Own software solutions *POISmobile* and *POIScentral* connect the control center with the vehicle
- Standardized communication via VDV interfaces and common data formats
- Real-time transmission via data hubs
- Connection to the vehicle network for data analysis and monitoring
- Solutions for operation in multiple and mixed traction



refit

Scalable modernization of passenger information

- Analysis of the old stock, determination of the requirements regarding connection to new systems, consideration of existing space conditions, desired future range of functions
- Conceptual design and planning of the scope of the refit, taking into account the compatibility of old and new
- In most cases: Development of new interfaces to ensure communication with the existing systems
- Installation, commissioning and acceptance by our service staff on site
- Our advantage: projects in mixed traction that have already been successfully completed , broad knowledge of current and proven solutions from the competition on the market

Ticketing

Ticket vending machines and billing solutions

- Flexible range of POS systems and ticket vending machines, for mobile or stationary use and for any tariff system, networked with a client-capable backend
- Various functions according to customer requirements: e-ticketing, cashless/paperless, integration of a barcode scanner, etc.
- Connection of the ticketing system to the passenger information with central administration using our own software is possible without any problems
- Connection to common billing systems such as DaX , ZPS-NOVA or VDV-KA



Power for Mobility! © 2024





Smart Mobility

Increased efficiency through GPS tracking

- Smart Mobility systems for securing and monitoring in transport, construction, agriculture, disposal or logistics
- Service packages instead of pure hardware installation: we determine requirements and efficiency potential and align hardware and software accordingly
- Analysis of the data obtained and regular Reporting with clear recommendations for action
- Different functions for different markets:
 - Shock, position and movement detection
 - Position-dependent alarms through geofencing
 - Battery and/or solar operation for applications without power supply
 - Railway approval according to EN 50155, road approval according to e1 (E-Mark)
 - Interference-free and explosion-proof according to ATEX II 2 G Exib IIB T4
 - Remote access, (wireless) connection of external sensors





Power for Mobility!



FELA Management AG
Basadingerstrasse 18
CH-8253 Diessenhofen

info@fela.ch
www.fela.swiss
Tel.: +41 52 646 46 46

