

Touchpanel (HMI)

Robust and Sturdy

The Robust and Sturdy Touchpanel acts as the Control Device for the Driver and displays various items of Information in the Driver's Cabin. Designed for use in Rail Passenger Transport under Conditions with Adverse Mechanical and Electromagnetic Influences.

The HMI Touchpanel can be Connected to Third-Party Systems and adapted Flexibly to the Customer's Installation Situation. The Reflection-Free Display is fitted with LED Background lighting and Regulated using a Light Sensor.

Robust and Sturdy, it is Easy to Install using fixing holes in Accordance with UIC 612 and complies with Railway Standard EN 50155.

Touchpanel (HMI) 10.4"

- Robust
- Easy to Install
- Configurable
- Resistant to Vibration
- Protected against Electromagnetic Effects and Temperature Differences
- Can be Connected to Third-Party-Systems
- Adaptable to installation situation
- Automatic Backlight Control

In Addition, Maintenance and Quick Diagnostic Functions can also be carried out via the Operating Panel:

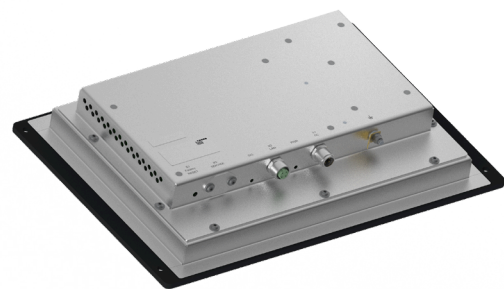
- Update of Equipment Software
- Query of the Device Status of all PIS Components
- Function for Updateing the Data Supply



Touchpanel (HMI)

Technical Specifications

■ Nominal Voltage	Wide Range Input 24 V – 110 V, -30 / +25% (EN50155)
■ Power Interruption	Class S2 (EN 50155)
■ Power Consumption	Max. 50 W
■ Operating Temperature	Temperature Class T1 acc. to EN 50155
■ Storage Temperature	-20 bis +60 °C
■ Humidit	Max. 90% relativ Humidity, Non-Condensing
■ Ethernet	10/100Base-TX [FD] acc. to IEEE 802.3
■ Protection Class	Front IP65 Built-In, Rear IP20
■ Weight	2,5 kg
■ Dimensions	Height 214, Width 310, Depth 69,5 mm, Installation Depth 63,5 mm
■ Construction	Metal Housing made of Aluminium and Chrom Steel, Front Glass 3 mm ESG, optically Anti Reflective; Front Panel with Anti-Graffiti-Powder Coating



Subject to Availability, Technical Changes, Prices, Misprints, Omissions and Errors.

In Certain Cases, the Company and Product Names mentioned are Registered Trademarks of the Respective Manufacturers.
Image Credit: FELA Management AG | istock



FELA Management AG
Basadingerstrasse 18
CH-8253 Diessenhofen

Tel.: +41 52 646 46 46
info@fela.ch